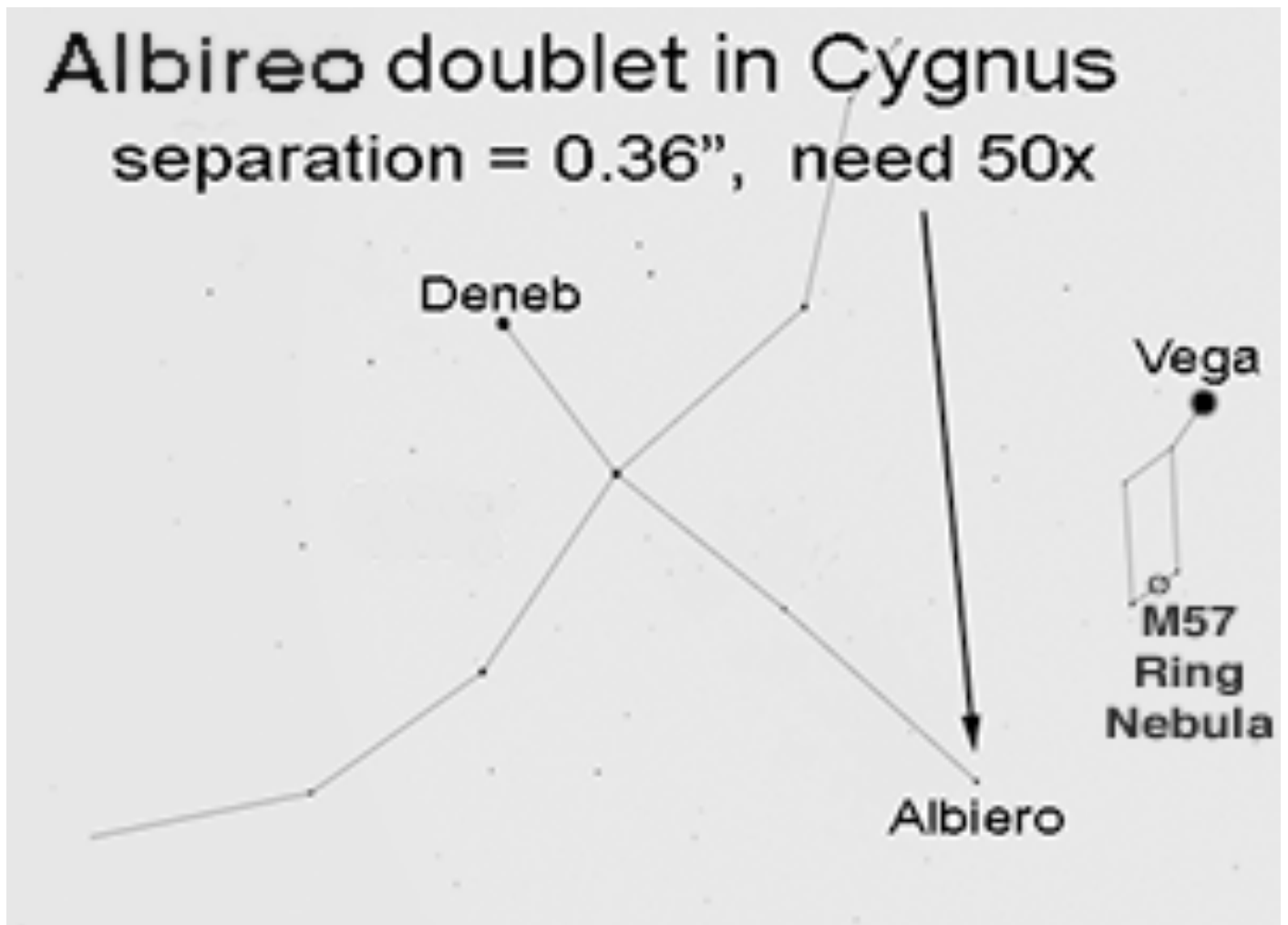


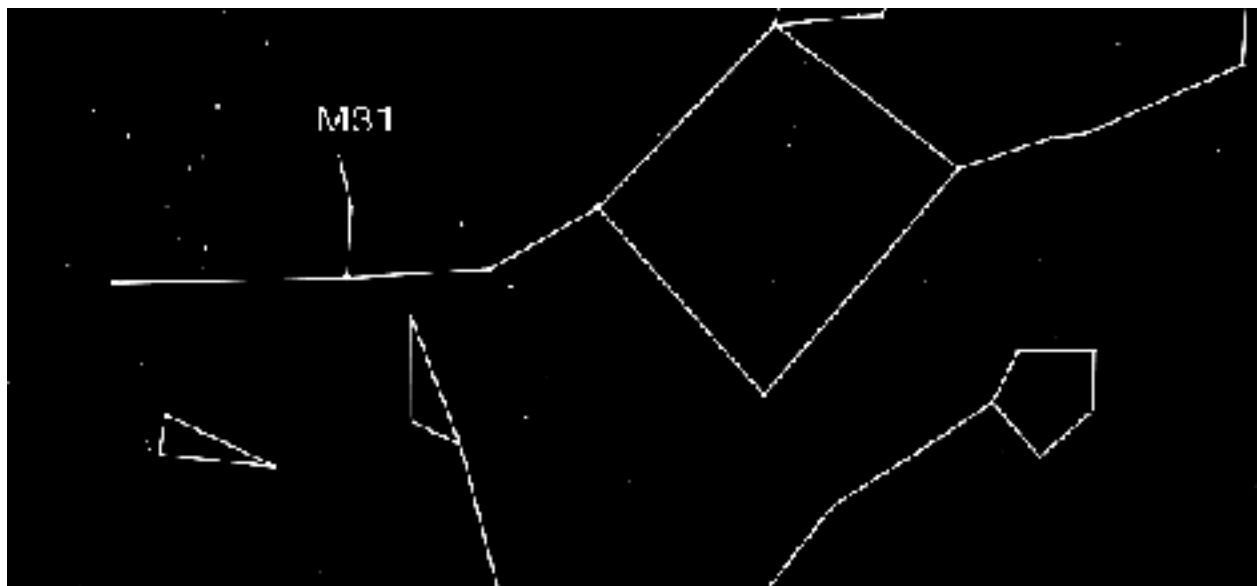
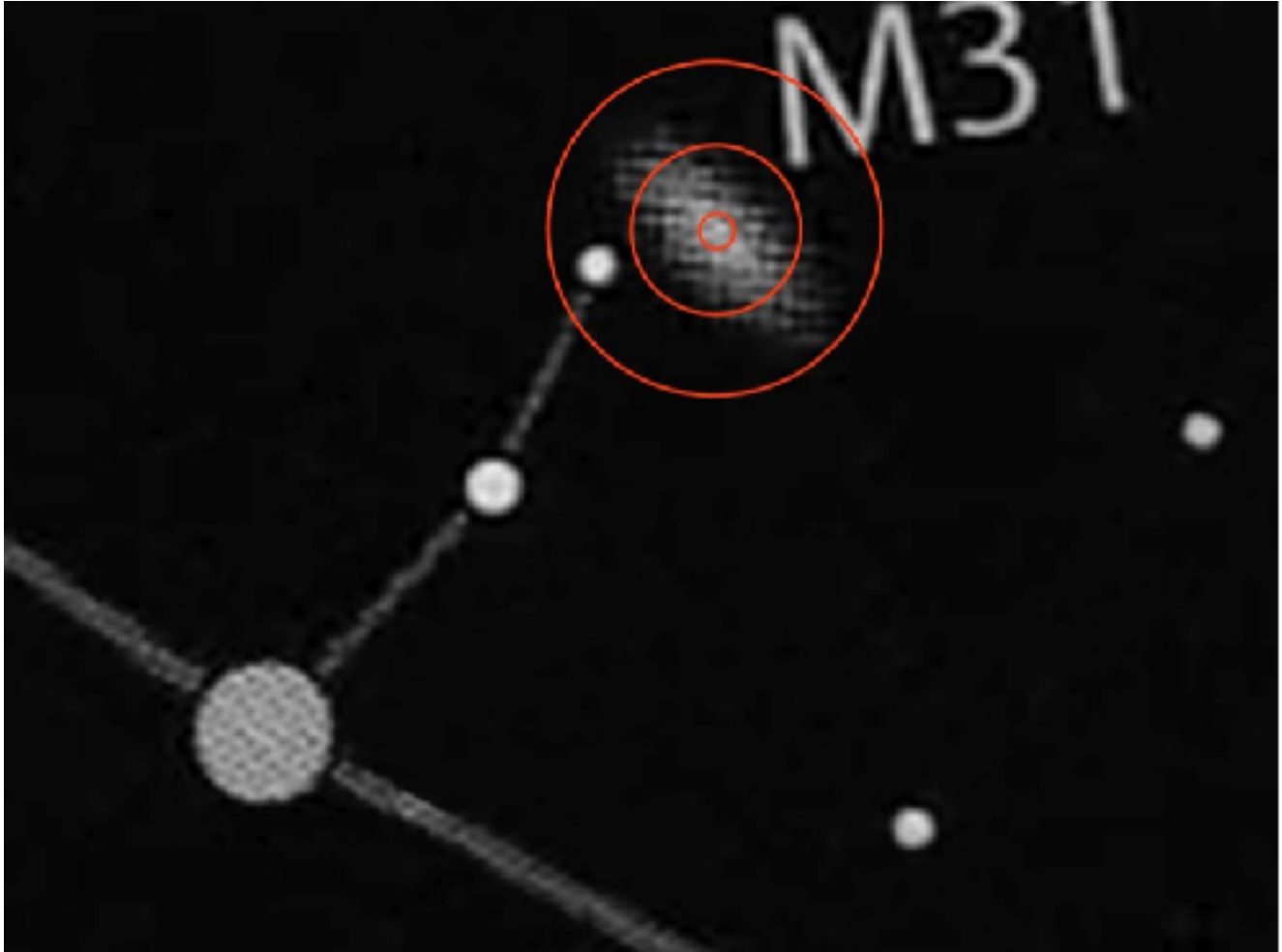
The easier doublets

more of [EdsStuff](#)

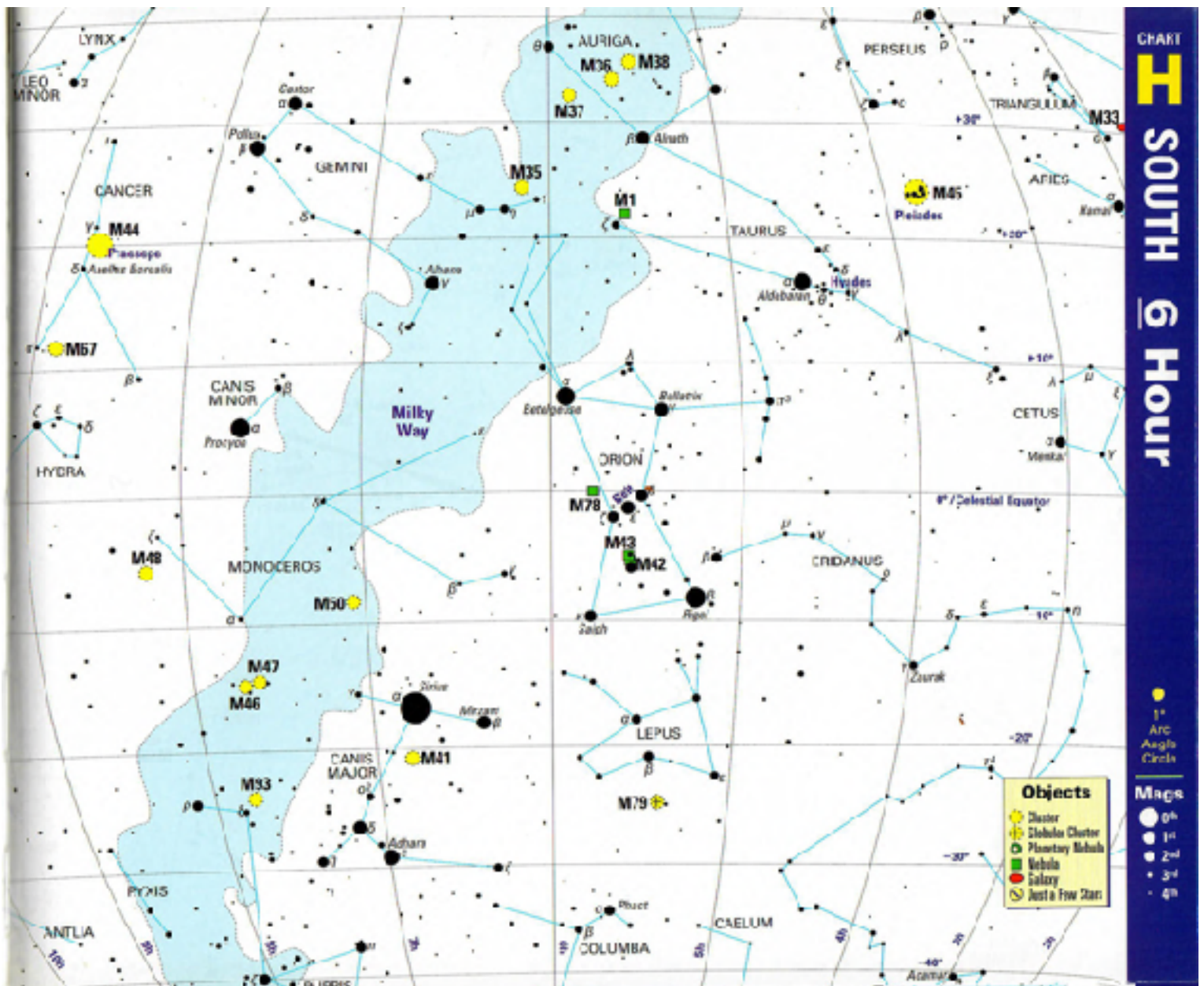


Star hopping to the Andromeda Galaxy

It's is two+ dim stars above the second brighter star out to the north from the north corner of the Great Square of Pegasus, when viewed after it rises in the East.



For locating
the Pleiades, M45,
the Crab Nebula, M1
(with neutron pulsar center from SN1024)
(It's 1° from Taurus horn star) and

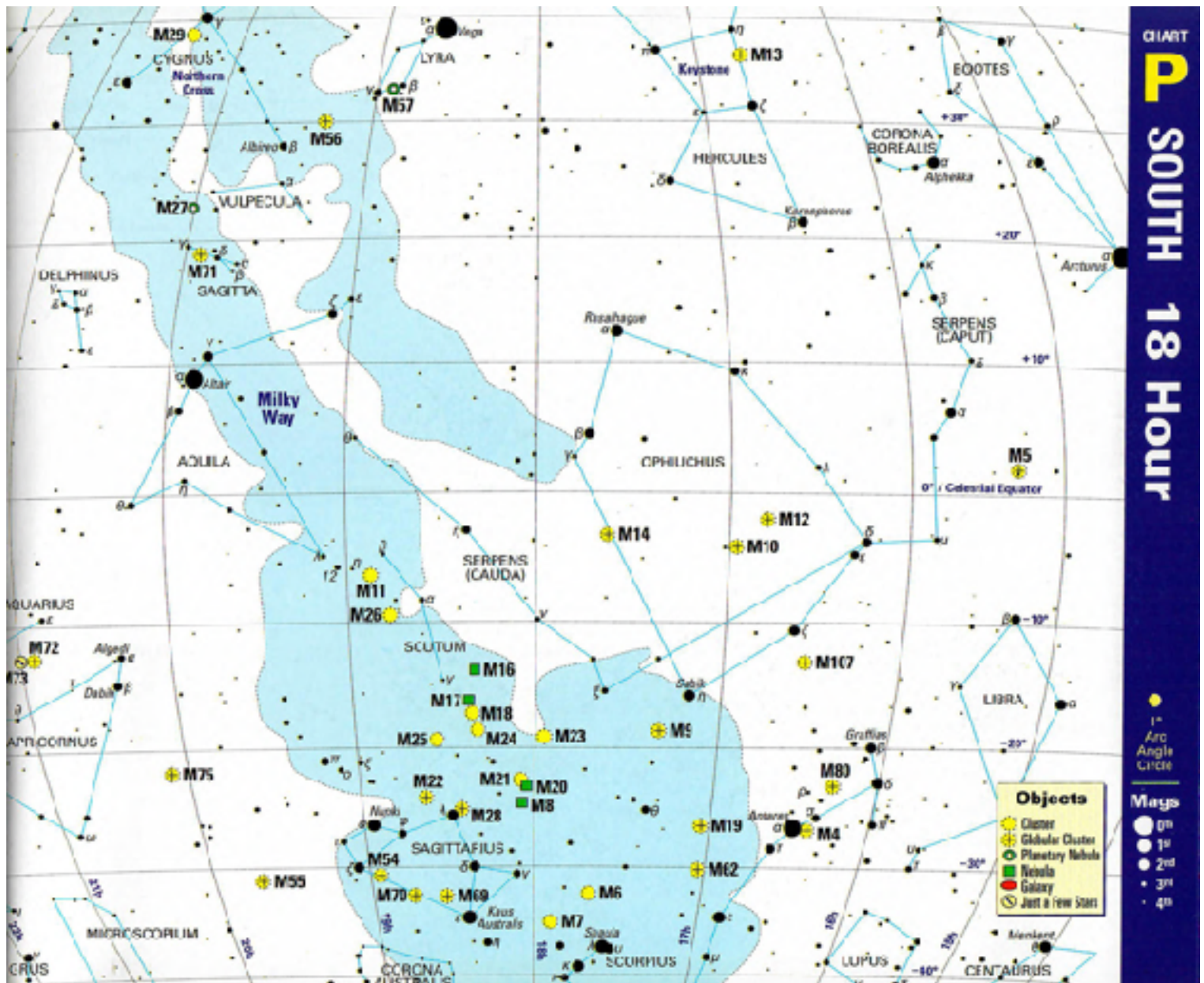


For locating

the Ring Nebula, M57 (around a red giant) and

the Hercules Globular Cluster, M13

Antares & M4



Above sky charts are from "The Next Step, Finding and Viewing Messier's Objects," by Ken Graun.